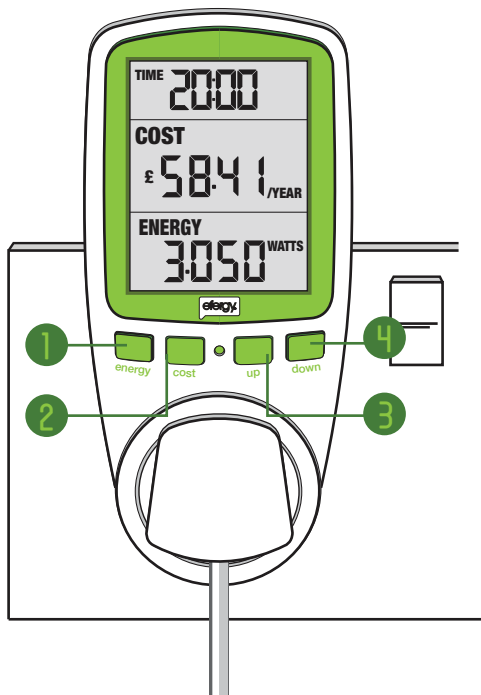


BUTTONS

- 1 energy
- 2 cost
- 3 up
- 4 down

REDUCE **MONITOR** SAVE

ENERGY MONITORING SOCKET INSTRUCTIONS

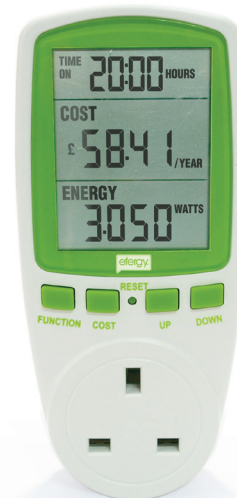


TECHNICAL INFORMATION

Operating Voltage	240V
Operating Current	13A max.
Working Voltage	150V - 276V
Accuracy	+/- 2%

DISPLAY RANGE

Time	0s - 9999 days
Power	0W - 9999W
Energy	0 - 9999kWh
Voltage	0 - 9999V
Current	0.000 - 13.00A
Frequency	0.000 - 9999Hz
Price	00.00 - 99.99\$



www.efergy.com

SINGLE TARIFF SET-UP

- Press and hold the **cost** button to enter set-up
- You will then see the currency symbol flashing
- Use **up** & **down** buttons to choose your currency. Press **cost**
- Use **up** & **down** buttons to choose TARIFF 1. Press **cost**
- Use **up** and **down** buttons to set the tariff cost
- Press the **cost** button to move on to the next digit
- Repeat the process until you have entered each digit
- Press **cost** once more to exit

DUAL TARIFF SET-UP

- Enter set-up as described above, but select DUAL TARIFF
- Use the **up** and **down** buttons to set tariff 1 start time
- Press the **cost** button to move on to the next digit
- Repeat the process to set tariff 2 start time. Press **cost**
- Again, use the same process to set tariff 1 & tariff 2 cost
- Press **cost** to exit after setting cost details for both tariffs
- Plug in the EMS product to start saving money and energy now

TIME SET-UP

- Press and hold **up** to enter set-up. Press **energy** to begin
- Use **up** and **down** to set each digit. Press **energy** to confirm
- Press **cost** to exit

HOW IT WORKS

The **energy monitoring socket** is a simple plug-in device that sits between the appliance and the wall socket. When you plug in an appliance, the efergy energy monitoring socket displays the consumption of that appliance in watts and the cost per year. You can also view the cost accumulated so far and the cost per day by pressing the **cost** button.

INSTANT SAVINGS

The **energy monitoring socket** uses real time data to help you become more aware of how much electricity an appliance is using. With this knowledge you can make more informed choices about what, when and how to use the appliance according to your energy saving objectives

CUMULATIVE DATA

The **energy monitoring socket** adds up your energy data cumulatively so that you can see how much energy you've used since the appliance was switched on. Also you can check how long the appliance has been running for by pressing the **up** and **down** buttons.



DIFFERENT MODES

The **energy monitoring socket** is flexible in the way you can view data. Press the **cost** button to switch between cost settings, the **energy** button to switch between energy settings, and you can change the time setting by pressing the **up** button (see the set-up instructions left).

COST

So Far
Per Day
Per Year

ENERGY

Watt (W)
Kilowatt Hours (kWh)
Voltage (V)
Current (A)
Frequency (Hz)
Power Factor (%)
Max. Watts (W)

TIME

Seconds
Minutes
Hours
Days

MONITOR REDUCE SAVE